

BROWN / EDIBLE CRAB

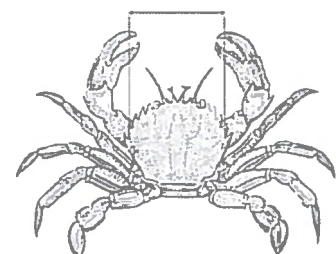
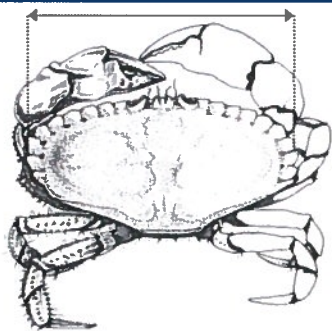
(*Cancer pagurus*)

Minimum landing sizes

140 mm - Shetland Islands

150 mm - Rest of Scotland

To measure - width of the carapace, perpendicular to the antero-posterior midline of the carapace.



VELVET CRAB (*Necora puber*)

Minimum landing size - 70 mm

To measure - width of the carapace, across the broadest part of the back (excluding spines).

LOBSTER (*Homarus gammarus*)

Minimum landing sizes

90 mm - Shetland Islands, Orkney Islands, Outer Hebrides

88 mm - West Coast from

Cape Wrath to 55°N*

87 mm - Rest of Scotland

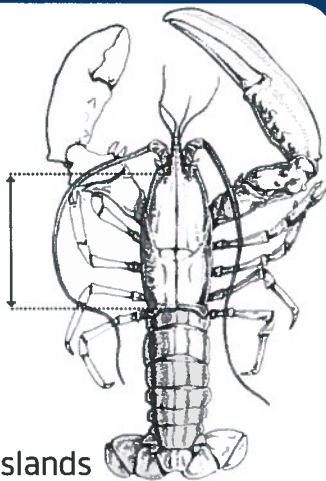
*from 25/02/18 to 24/02/19, then 90 mm from 25/02/19

Maximum landing sizes for females

155 mm - Shetland Islands, Orkney Islands

145 mm - Rest of Scotland

To measure - length of the carapace, parallel to the midline, from the back of either eye socket to the distal edge of the carapace.



OTHER SPECIES

CRAWFISH (*Palinurus spp.*)

Minimum landing size - 95 mm

To measure - length of the carapace, from the tip of the rostrum to the midpoint of the distal edge of the carapace.

GREEN CRAB (*Carcinus maenas*)

Minimum landing size - 70 mm (Orkney Islands)

To measure - width of the carapace, perpendicular to the antero-posterior midline of the carapace (including spines).

SPIDER CRAB (*Maja squinado*)

Minimum landing sizes

130 mm - Male spider crab

120 mm - Female spider crab

To measure - length of the carapace, along the midline, from the edge of the carapace between the rostrums to the posterior edge of the carapace.



Scottish Government
Riaghaltas na h-Alba
gov.scot

marinescotland

LANDING CONTROLS FOR CRAB & LOBSTER FISHERIES IN SCOTLAND

With effect from
25 February 2018

OTHER CONTROLS BERRIED VELVET CRAB

It is prohibited to land a berried (egg bearing) velvet crab.

V NOTCHED LOBSTER / CRAWFISH

It is prohibited to fish for or land a lobster or crawfish that bears a v notch, or that has been mutilated to obscure a v notch.

'CRIPPLED' FEMALE LOBSTER

It is prohibited to land a 'crippled' female lobster (missing one or both claws) caught in the inshore waters of the Outer Hebrides.

FURTHER INFORMATION

More information can be found on the Marine Scotland website:

www.gov.scot/Topics/marine/Sea-Fisheries/InshoreFisheries/crab-lobster-landing-controls

If you have any questions about these controls, please contact your local Fishery Office:

www.gov.scot/Topics/marine/Compliance/fishoffices